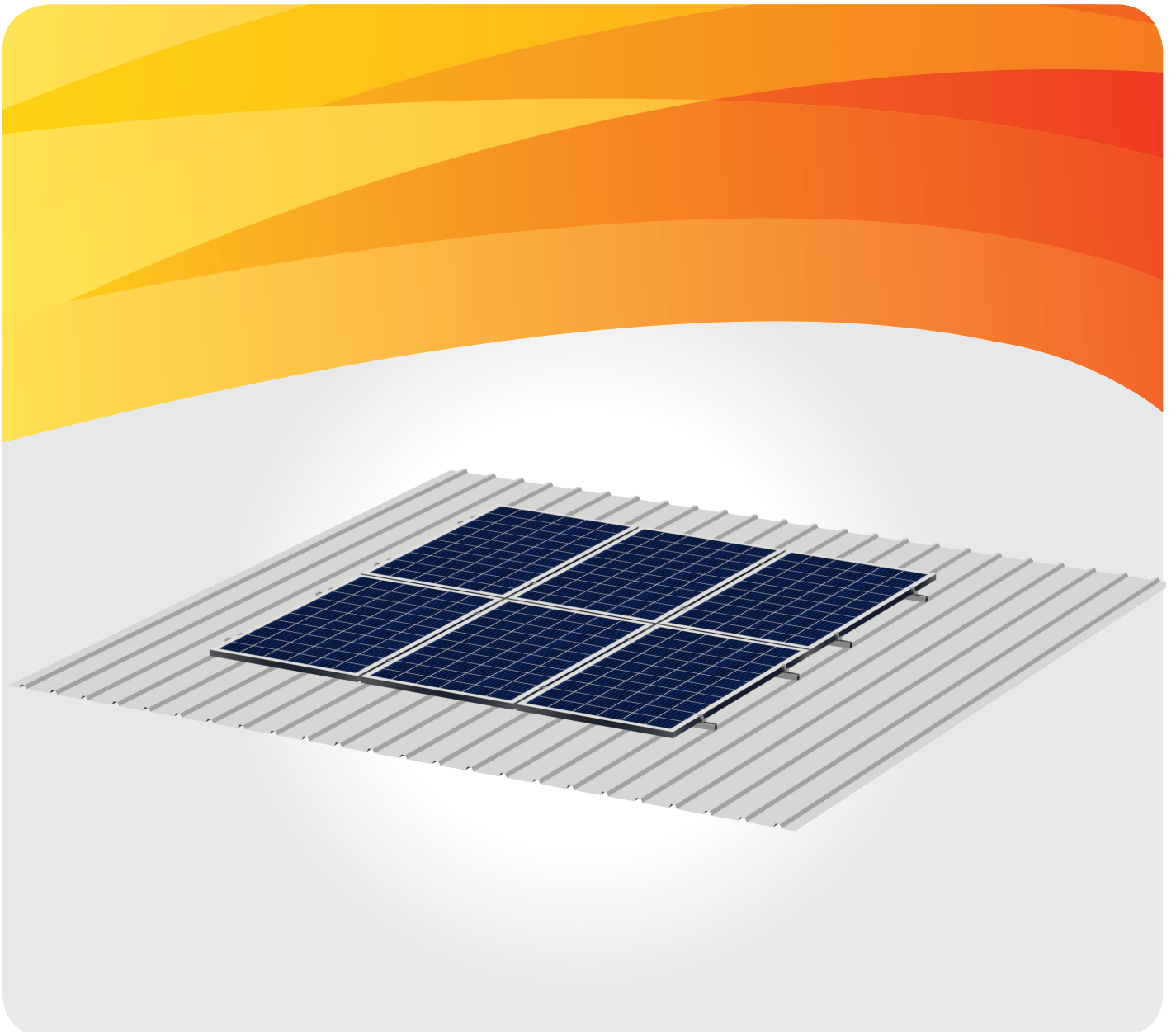


# PV-ezRack®

By Cleenergy 

## SolarRoof™ DT Rail Penetrative

Brand new solution for PV Installation on Commercial Tin Roof



# SolarRoof™ DT Rail Penetrative

## Brand new solution for PV Installation on Commercial Tin Roof

PV-ezRack® SolarRoof™ DT Rail System is a universal solution designed for PV Module installation on tin roof. DT Rail and Clamps with unique sectional property, PV-ezRack® SolarRoof™ DT Rail System could offer robust and quick installation for our clients.

### Main Benefits

#### Quick and easy installation

Clenergy apply innovative M-Module in End and Inter Clamps, which helps to make the PV module installation earlier than before.

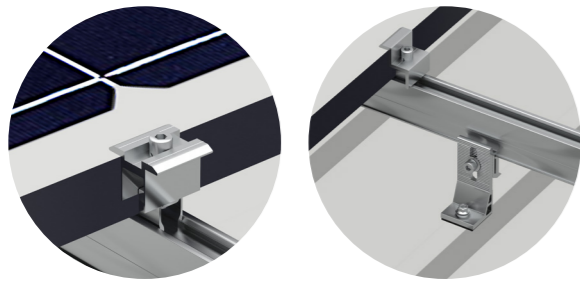
#### Economy

With new sectional property design, the DT Rail provide larger span solutions for PV installation on tin roof. Therefore, the project cost could be reduced as fewer interfaces required.

#### Versatility

With various types of Interfaces and full size of End and Inter Clamps, PV-ezRack® SolarRoof™ could be compatible with common tin roofs and PV-modules over the market.

#### Partial View For M-module connection



#### Materials

AL6005-T5 | SUS304 | Q235

Contact us or one of our qualified resellers for a personalised quotation today.

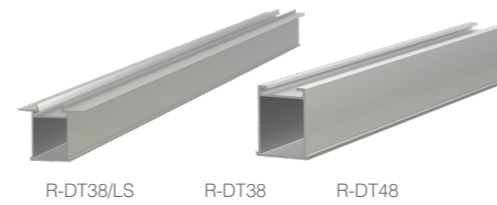
12 Year Warranty\*

Commercial

Residential

International Patent  
PCT/AU2009/000616

\*see Clenergy PV-ezRack warranty for further details



R-DT38/LS R-DT38 R-DT48

#### DT Rail

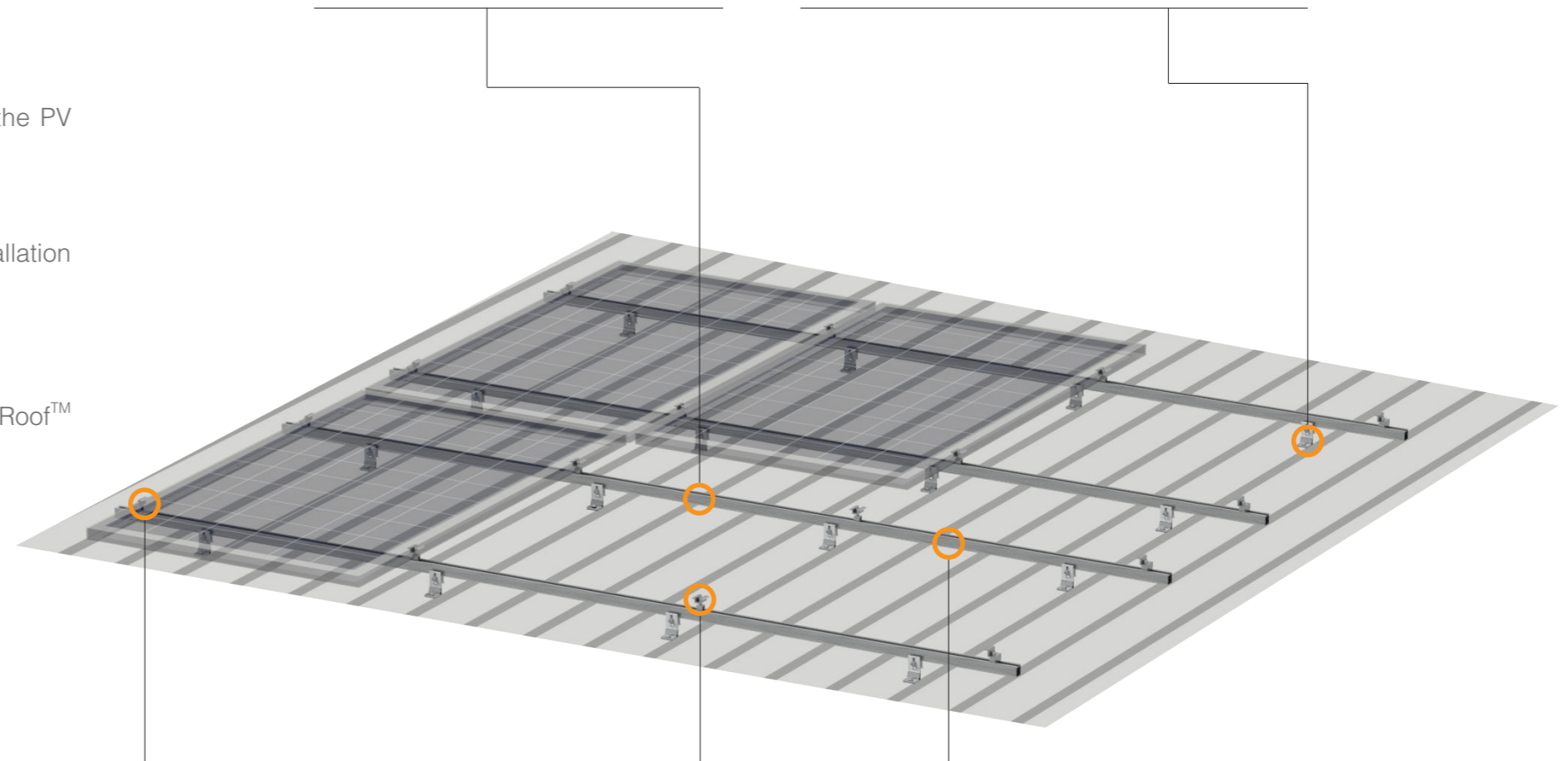
Fixed on Tin Interfaces, and used for supporting PV modules.



I-05A/EZC/SM6.3/65/CS

#### Tin Roof Hook A with ezClick connection

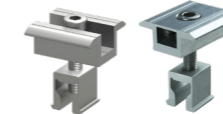
Fixed on the rib of roof and used for supporting the whole PV system.



EC-M/OM

#### End Clamp

Clicked the M-Module into the channel of DT Rail and placed the End Clamp at the first or last PV Module of each array. The Clamp is used for fixing PV Module.



IC-M/U18 IC-II-M

#### Inter Clamp

Clicked the M-Module into the channel of DT Rail and placed the Inter Clamp between two PV Modules. The Clamp is used for fixing PV Module.



SP-DT38 SP-DT48

#### Splice for DT Rail

Connected two DT Rails with 4 sets of self-tapping screws.

**PV-ezRack®**  
By Clenergy



## Innovating renewable energy

### Clenergy Australia

1/10 Duerdin Street, Clayton VIC 3168 Australia  
 Tel: +61 3 9239 8088 Fax: +61 3 9239 8024  
 E-mail: sales@clenergy.com.au  
[www.clenergy.com.au](http://www.clenergy.com.au)

### Clenergy China

999-1009 Min'an Rd, Huoju Hi-tech Ind. Dev. Zone  
 Xiang'an District 361101, Xiamen, Fujian, China  
 Tel: +86 592 311 0088 Fax: +86 592 599 5028  
 E-mail: sales@clenergy.com.cn  
[www.clenergy.com.cn](http://www.clenergy.com.cn)

### Clenergy EMEA

Esplanade 41, 20354 Hamburg, Germany  
 Tel: +49 (0) 40 3562 389 00  
 E-mail: sales.emea@clenergy.com

### Clenergy Japan

Nittochi Yamashita Building 5th Floor  
 23 Yamashita-cho, Yokohama, 231-0023 Japan  
 Tel: +81 45 228 8226 Fax: +81 45 228 8316  
 E-mail: sales@clenergy.co.jp  
[www.clenergy.jp](http://www.clenergy.jp)

### Clenergy Philippines

145 Yakal St., San Antonio village, Makati City, Philippines  
 Tel: +63 977 8407240  
 E-mail: sales\_ph@clenergy.com  
[www.clenergy.ph](http://www.clenergy.ph)

### Clenergy Thailand

9/2, 5th Floor, Vorasin Building, Soi Yasob 2, Viphavadee-Rungsit  
 Road, Chomphon Sub-district, Chatuchak District, Bangkok 10900  
 Tel: +66 (0) 2 277 5201, +66 (0) 6 3228-0200  
 E-mail: sales\_th@clenergy.com, support\_th@clenergy.com  
[www.clenergythailand.com](http://www.clenergythailand.com)

### Clenergy Singapore

24 Raffles Place #28-01 Clifford Centre Singapore 048621  
 Tel: +65 9743 1425  
 E-mail: vincent.chan@clenergy.com

### Clenergy Malaysia

Tel: +86 18750231005  
 E-mail: sales\_em@clenergy.com

### Clenergy Vietnam

Tel: +86 592 3110095  
 E-mail: sales\_vietnam@clenergy.com;  
 susie.chen@clenergy.com

### Clenergy Korea

Tel: +8210-4684-8088  
 E-mail: sales.kr@clenergy.com

## Worldwide Network

